



4140 Motor Grader



Engine	DCEC
Rated Power	112kW (150hp) @ 2,200 rpm
Blade Width	3,660 mm
Maximum Speed	41 km/h
Draw Bar Pull	70 kN
Operating Weight	13,500 kg

4140 Motor Grader



ENGINE

Emission Regulation	Tier 2 / Stage II
Make	DCEC
Gross Power	112 kW (150 hp) @ 2,200 rpm
Net Power	101 kW (135 hp) @ 2,200 rpm
Peak Torque	670 N. m @ 1,400 rpm
Torque Rise %	38 %
Number of Cylinders	6
Aspiration	turbo air-to-air aftercooled

TRANSMISSION

Transmission Type	power shift
Transmission Configuration	6f / 3r
Torque Converter	three - member single turbine
Maximum Travel Speed, fwd	41 km/h
Maximum Travel Speed, rev	29 km/h
Number of Speeds, fwd	6
Number of Speeds, rev	3

AXLES

Differential Type	limited slip standard
Final Drive Type	chain drive
Axle Oscillation	15°
Front Axle Type	all welded steel frame
Front Axle, Wheel Lean Angle	left / right 17°

STEERING

Steering Configuration	load sensor steering gear
Steering Relief Pressure	16.7 ± 0.5 MPa
Minimum Turning Radius	7,200 mm
Steering Angle	±50°
Frame Articulation Angle	±20°

BRAKES

Service Brake Type	shoe
Service Brake Location	rear axle

TIRES

Tire Size	13.00-24
-----------	----------

HYDRAULIC SYSTEM

Main Pump Type	gear
Main Relief Pressure	18 ± 0.5 MPa
Pilot Pump Flow	118 L/min

TANDEM DRIVE PERFORMANCE

Height	600 mm
Width	210 mm
Center Distance	1,538 mm
Oscillating Angle	±15°

MOLDBOARD PERFORMANCE

Bank Cut Angle	40~70°
Moldboard Lift Above Ground	450 mm
Moldboard Side Shift, right / left	650 / 520 mm
Maximum Sloping Angle	90°

Cutting Depth	600 mm
Circle Rotation	360°
Circle Diameter	1,265 mm
Circle Thickness	120 mm

WORKING CAPACITIES

Maximum Draw Pull	70 kN
Cutting Pressure	6,000 kg

DIMENSIONS

Wheelbase	5,900 mm
Overall Length	8,400 mm
Overall Height with Cab	3,350 mm
Clearance under Front Axle	535 mm
Moldboard Standard Length	3,660 mm
Moldboard Standard Thickness	19 mm
Moldboard Standard Height	610 mm

OPERATING WEIGHTS

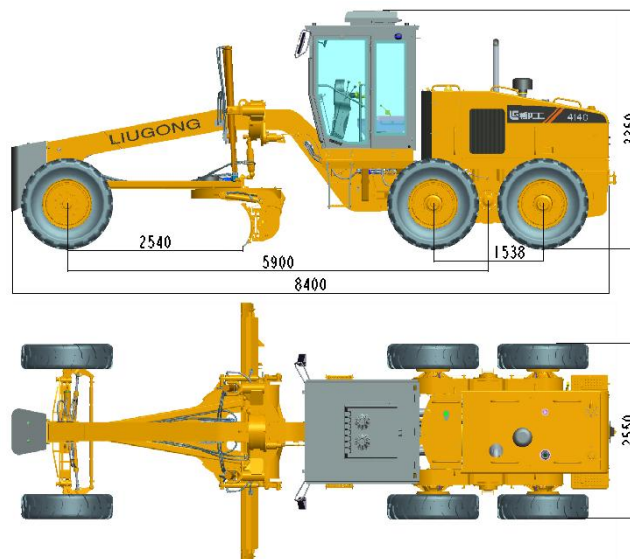
Operating Weight	13,500 kg
On Front Wheels	3,850 kg
On Rear Wheels	9,650 kg

SERVICE CAPACITIES

Fuel Tank	240 L
Engine Oil	17 L
Cooling System	40 L
Hydraulic Reservoir	100 L
Transmission And Torque Converter	45 L
Tandems, Each	24 L

OPTIONAL EQUIPMENT

- Rear Ripper
- Front Dozer
- Automatic Leveling System
- Rotary Beacon
- Frictional flake worm box



Guangxi Liugong Machinery Co., Ltd.

No. 1 Liutai Road, Liuzhou, Guangxi 545007, PR China

T: +86 772 388 6124 E: overseas@liugong.com

www.liugong.com

Specifications and designs are subject to change without notice. Machines shown may include optional equipment.